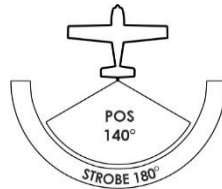


# POSISTROBE DAYLITE™

P/N: AVE-PSPSYW-D01

## Rear Position / Strobe LED light

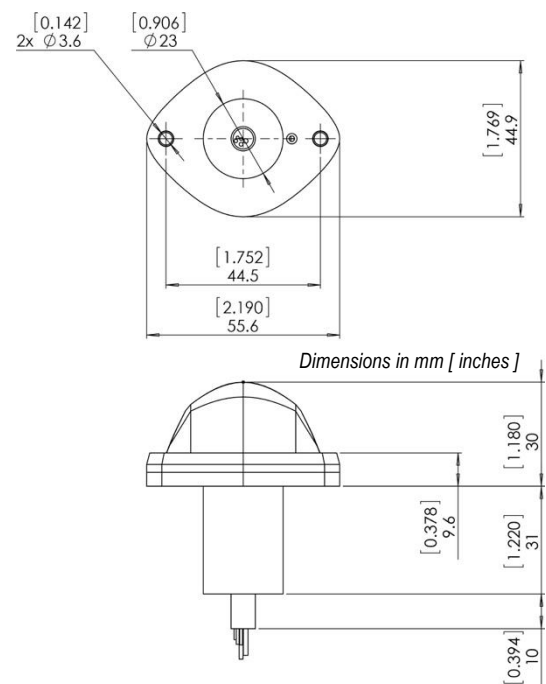
At only 30 millimeters in height (1.180 inch) the new PosiStrobe DayLite™ is a value light that does not sacrifice anything in performance or standards as other economy - priced lights offered by the competition. Our exclusive and highly advanced optics and chrome reflector system, our unmatched power and led management circuitry and our famous lowest-drag profile in the industry are all combined into a product that gives you unmatched POWER and FEATURES. Lower, narrower and shorter PLUS much lighter than industry lights in this category!



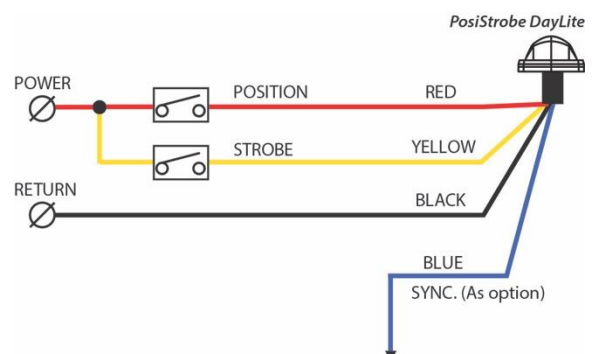
## Specification

Dimensions (mm):	44.9 mm x 55.6 mm x 30 mm
Dimensions (inches):	1.769" x 2.19" x 1.18"
Weight (g):	100 g
Weight (oz):	3.53 oz
Operating Voltage Range:	9 – 36 VDC
Input Current – Position:	0.17A @36V, 0.21A @28V, 0.4A @14V, 0.62A @9V
Input Current – Strobe:	1.6A @36V, 2.0A @28V, 4.7A @14V, 5.9A @9V
Output Power – Position	4.3 W
Output Power – Strobe:	41 W
Repetition Rate of Strobe:	50 cycles per minute
Ambient Temperature:	from -55°C to +85°C from -67°F to +185°F
Overheat Protection:	YES (+85°C)
Recommended size of mounting screw:	M3
Reverse Polarity Protection:	YES
Transient Voltage:	80V at 2sec max, both polarities
Under-Voltage Protection (lockout):	YES (9V)
Over-Voltage Protection (lockout):	YES (36V)
Waterproof, Dust-proof, Shock-proof, Vibration-proof:	YES

## Drawing



## Wiring Diagram



**NOT APPROVED FOR INSTALLATION ON CERTIFIED AIRCRAFT  
THIS IS NOT A TSO/ETSO CERTIFIED LIGHT**