



Installation Instruction

GULFSTREAM

Flashlight installation on various Gulfstream aircraft

Gulfstream GII, GIII, GIV & GV

Gulfstream GVI

Gulfstream G150

Gulfstream G200 / Galaxy

Gulfstream G280

Table of Contents

PART 0	MANUAL ADMINISTRATION	3
0.1	DOCUMENT APPROVAL	3
0.2	AMENDMENT RECORD PROCEDURE	3
0.3	EFFECTED PAGES PROCEDURE	3
PART 1	INSTALLATION INSTRUCTION	4
1.1	GENERAL	4
1.2	CONTINUED AIRWORTHINESS	4
1.3	DESCRIPTION	4
1.4	FLASHLIGHT INSTALLATION	5
PART 2	COMPLIANCE DEMONSTRATION	8

Part 0 Manual Administration

0.1 Document approval

This document has been established in accordance with an alternative procedure to DOA approved under EASA AP429.
This installation Instruction is applicable for all Gulfstream types.

Compiled by: _____ 17. – Jul. - 2017
Peter Nezval
Engineer, Aveo Engineering Group, s.r.o.

Approved by: _____ 17. – Jul. - 2017
Georg Hartl
Head of DO, Aveo Engineering Group, s.r.o.

0.2 Amendment Record procedure

The master copy of this document shall be kept electronically as a read only document under the control of Aveo Engineering Group, s.r.o. as Master Copy.
ALL amendments to this manual will initiate a raise of Issue
ALL raises of issue will be given a sequential Alphabetic Issue Ident sequentially from 01 to 99 in Table 01 - **Issue No:** Column– Initial Issue of Document will be **“01”**
ALL Issues of this document will be approved by Head of DO

Issue No.	Details	Date	Effected Pages
01	Initial Issue	14.Jun.2017	ALL
02	Change Title and add list of aircraft types (not marked)	17.Jul. 2014	1
Table 01: Document Amendment Record Table			

0.3 Effected Pages Procedure

ALL pages affected by ANY raise of issue of this manual will be listed in Table 01 - *Effected Pages* Column.
The reason(s) for ALL raise of issue and description of change due to raise of issue will be provided for ALL raises of issue in Table 01 - *Details* Column.
Changes from the previous issue are highlighted by **YELLOW HIGHLIGHTING** over new content. AND **YELLOW HIGHLIGHTING** AND **CROSSING OUT** of deleted content.
Example (**CROSSING OUT**)

Part 1 Installation Instruction

1.1 General

This installation is to be performed in accordance to common practice as described in general practice section of the respective Gulfstream Aircraft Maintenance Manual.

The installer is responsible to follow the installation instructions in the latest revision of:

- Gulfstream AMM
- AVE-FLA070-IM

No drawings are applicable for this change.

The following appliances carry an ETSO authorization:

- none

The change is to be performed using the document AVE-MOD-016-MCS in the latest issue.

The aircraft manuals remain fully valid. For maintenance of the new lights follow the Aveo Installation Manuals referenced above.

1.2 Continued Airworthiness

The aircraft manuals remain fully valid. The inspection intervals and the procedures of the aircraft override the general statements in the component manuals as listed under §1.1.

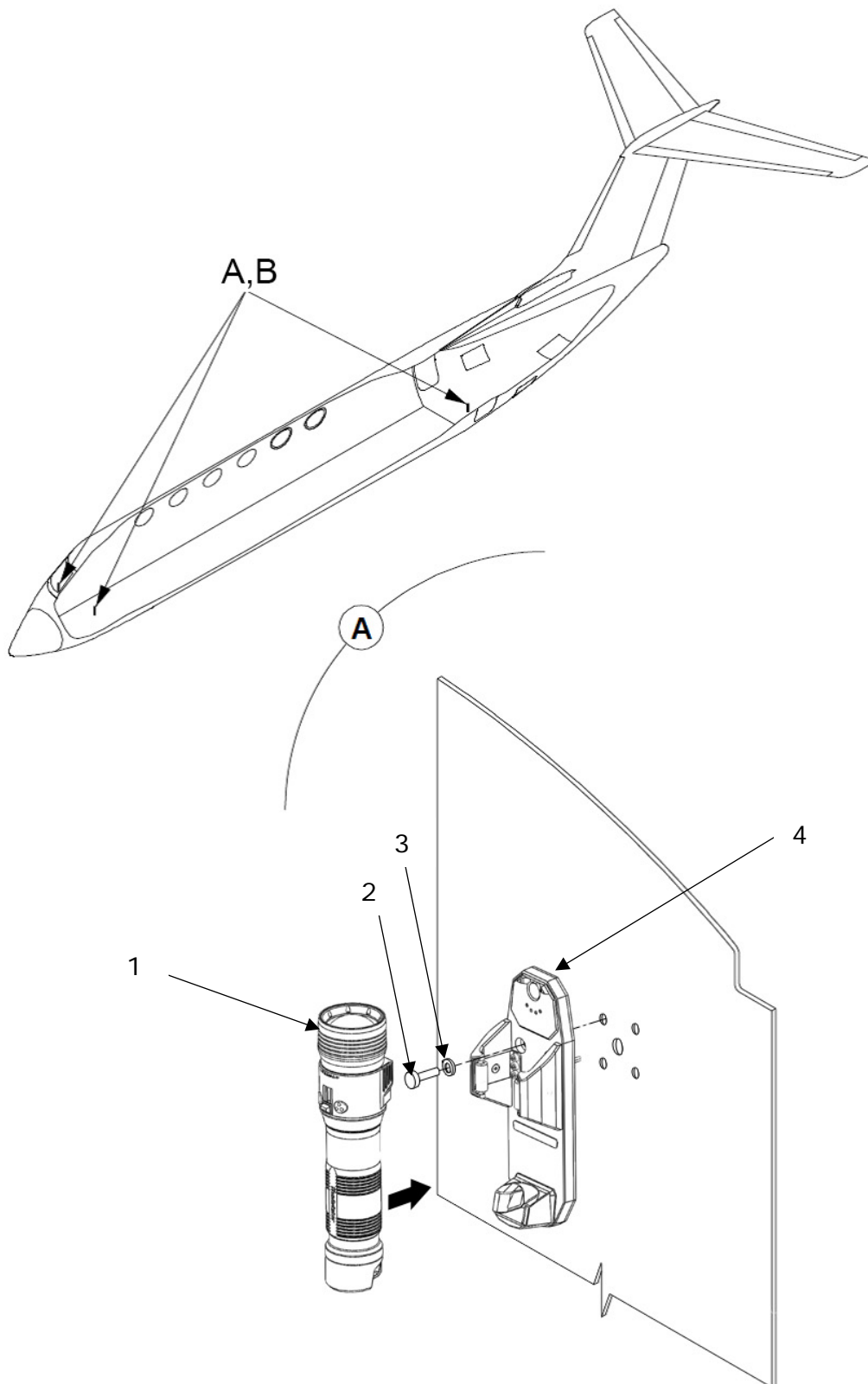
For inspection of the new lights themselves follow the procedure of the Aveo Installation Manuals referenced above.

1.3 Description

This modification is the replacement of the flashlights including the charger in the cockpit (2 units) and the baggage compartment (1 unit).

The lights are direct replacements and do not require any change on the A/C side.

1.4 Flashlight installation



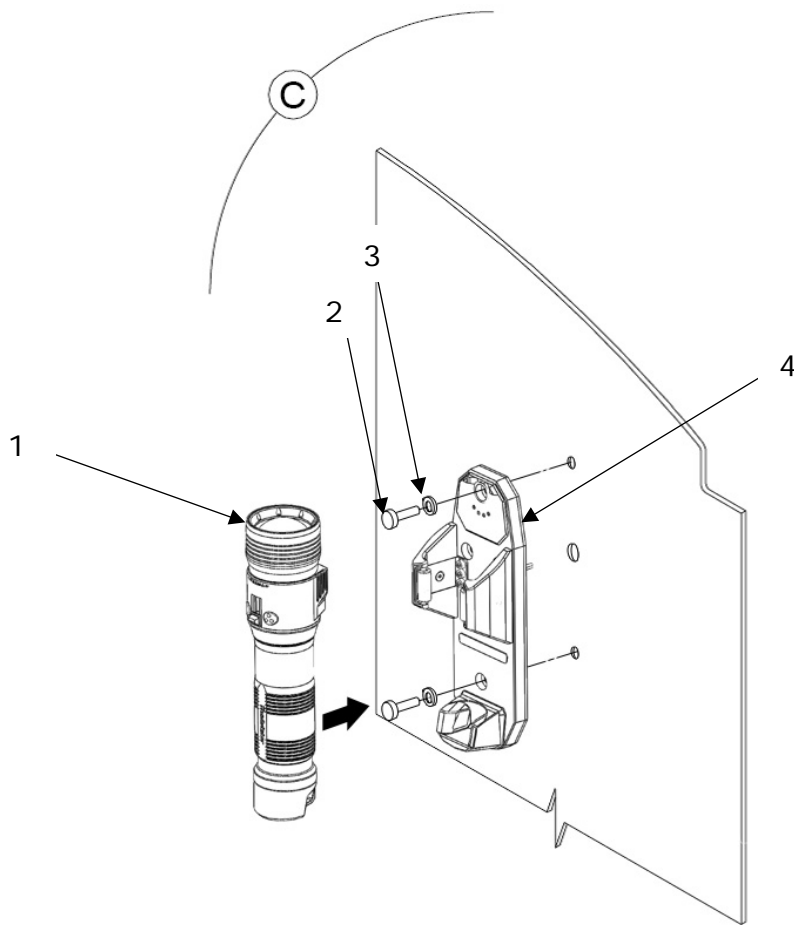
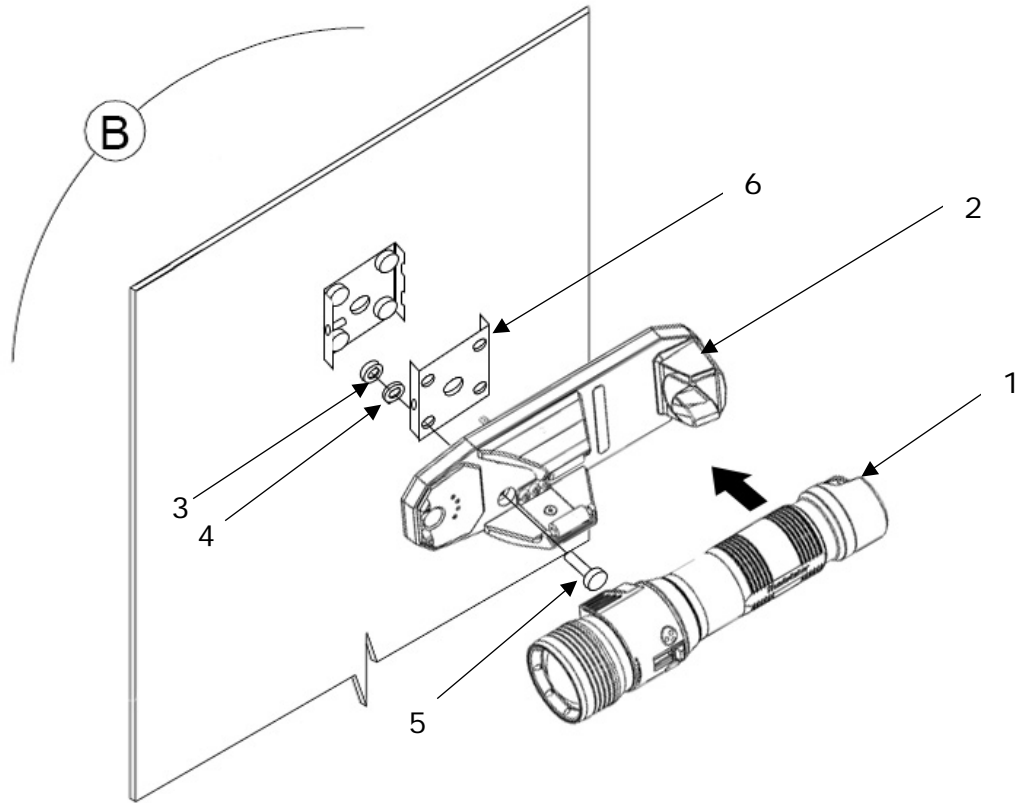


Figure and Index Number	Part Number	Description	Parts Avail.	QTY. Per assy.
A 1	AVE-FLA-001	Flashlight TheAviator		1
	AVE-FLA-P01	Flashlight TheAviator Pro		1
	AVE-FLA-S01	Flashlight TheAviator Survivor		1
	2	MS27039C1-09	SCREW (PILOT/COPILOT)	4
2A	MS35206-258	SCREW (BAGGAGE)	4	
3	AN960D10L	WASHER	4	
4	AVE-FCA-001	Flashlight cradle and charger		1
B 1	AVE-FLA-001	Flashlight TheAviator		1
	AVE-FLA-P01	Flashlight TheAviator Pro		1
	AVE-FLA-S01	Flashlight TheAviator Survivor		1
	2	AVE-FCA-001	Flashlight cradle and charger	1
	3	MS35649-206	Nut, self-locking	4
	4	AN960D10L	WASHER	4
5	MS27039C1-06	SCREW	4	
6	Original part	Bracket used for original installation		1
C 1	AVE-FLA-001	Flashlight TheAviator		1
	AVE-FLA-P01	Flashlight TheAviator Pro		1
	AVE-FLA-S01	Flashlight TheAviator Survivor		1
	2	MS27039C1-09	SCREW (PILOT/COPILOT)	2
2A	MS35206-258	SCREW (BAGGAGE)	2	
3	AN960D10L	WASHER	2	
4	AVE-FCA-001	Flashlight cradle and charger		1

REMARK

The different options are due to different interior layouts. Option A and B replace the original MagLite installation mainly used on GII through GVI. Option C replaces the DME flashlight mainly installed on G200 and G280.

NOTES

1. Remove flashlight and holder according to AMM
2. Disconnect the wiring of the flashlight charger
3. Connect the wiring of the new flashlight charger in the same manner than the original installation by using the component installation manual
4. Install the charger by using of fastener items as listed in the appropriate option. In case of option B using bolt adhesive Loctite 2400. The charger may be installed horizontally or vertically depending on interior and customer preference.

Part 2 Compliance demonstration

This document is in relation to the certification program AVE-MOD-016-PFC.
The compliance is demonstrated for the following certification specification:

Requirements	MoC	Statement of Compliance
CS 25.609 Protection of structure	MoC 0	(a) All parts installed are verified to be suitable. (b) Not applicable
CS 25.1301 Function and installation	MoC 0	(a) The flashlights and the charging cradle are qualified according to RTCA DO160. (b) Not applicable. (c) All equipment is installed within their limits.
CS 25.1529 Instructions for Continued Airworthiness	MoC 0	The modification does not require any changes to the aircraft maintenance procedure which is clearly stated in §1.1 General.