



Installation Instruction
Recognition and Downwash Lights

GULFSTREAM

SERIES

Table of Contents

PART 0	MANUAL ADMINISTRATION	3
0.1	DOCUMENT APPROVAL	3
0.2	AMENDMENT RECORD PROCEDURE	3
0.3	EFFECTED PAGES PROCEDURE	3
PART 1	INSTALLATION INSTRUCTION	4
1.1	GENERAL	4
1.2	CONTINUED AIRWORTHINESS	4
1.3	AIRWORTHINESS LIMITATIONS	4
1.4	DESCRIPTION	4
1.5	RECOGNITION LIGHT INSTALLATION-LEFT	5
1.6	RECOGNITION LIGHT INSTALLATION - RIGHT	6
1.7	WING-TIP DOWNWASH LIGHT INSTALLATION - LEFT	7
1.8	WING-TIP DOWNWASH LIGHT INSTALLATION - RIGHT	9
PART 2	COMPLIANCE DEMONSTRATION	11


Part 0 Manual Administration

0.1 Document approval

This document has been established in accordance with an alternative procedure to DOA approved under EASA AP429.

This installation Instruction is applicable for all Gulfstream GII (G1159 & G1159B), GIII (G1159A), GIV, GIV-X, GV, GV-SP.

Compiled by: _____ 14. – Feb. - 2019


Petr Jaros
Engineer, Aveo Engineering Group, s.r.o.

Approved by: _____ 14. – Feb. - 2019

Georg Hartl
Head of DO, Aveo Engineering Group, s.r.o.

0.2 Amendment Record procedure

The master copy of this document shall be kept electronically as a read only document under the control of Aveo Engineering Group, s.r.o. as Master Copy.

ALL amendments to this manual will initiate a raise of Issue

ALL raises of issue will be given a sequential Alphabetic Issue Ident sequentially from 01 to 99 in Table 01 - **Issue No:** Column– Initial Issue of Document will be **"01"**

ALL Issues of this document will be approved by Head of DO

Issue No.	Details	Date	Affected Pages
01	Initial Issue	14.Feb.2019	ALL

Table 01: Document Amendment Record Table

0.3 Affected Pages Procedure

ALL pages affected by ANY raise of issue of this document will be listed in Table 01 - *Affected Pages* Column.

The reason(s) for ALL raise of issue and description of change due to raise of issue will be provided for ALL raises of issue in Table 01 - *Details* Column.

Changes from the previous issue are highlighted by **YELLOW HIGHLIGHTING** over new content. AND **YELLOW HIGHLIGHTING** AND CROSSING OUT of deleted content.

Example **(CROSSING OUT)**

Part 1 Installation Instruction

1.1 General

This installation is to be performed in accordance to common practice as described in general practice section of the Gulfstream GV Aircraft Maintenance Manual.

The installer is responsible to follow the installation instructions in the latest revision of:

- Aircraft Maintenance Manual AMM
- AVE-N09PANSN-IM

All drawings applicable for this change are listed in the Drawing List:

- AVE-MOD-026-DL, issue 01

The following appliances carry an ETSO authorization:

- None

The change is to be performed using the document AVE-MOD-026-MCS in the latest issue.

The aircraft manuals remain fully valid. For maintenance of the new lights follow the Aveo Installation Manuals referenced above.

1.2 Continued Airworthiness

The aircraft manuals remain fully valid. The inspection intervals and the procedures of the aircraft override the general statements in the component manuals as listed under §1.1.

For inspection of the new lights themselves follow the procedure of the Aveo Installation Manuals referenced above.

1.3 Airworthiness Limitations

No new or changed airworthiness limitations result from this modification.

The airworthiness limitation section is approved and variations must also be approved.

1.4 Description

This modification is the replacement of recognition and downwash lights by the LED type Nubion light.

The lights are direct replacements and do not require any change on the A/C side.

1.5 Recognition Light Installation-left

Kit Number: GLF-07

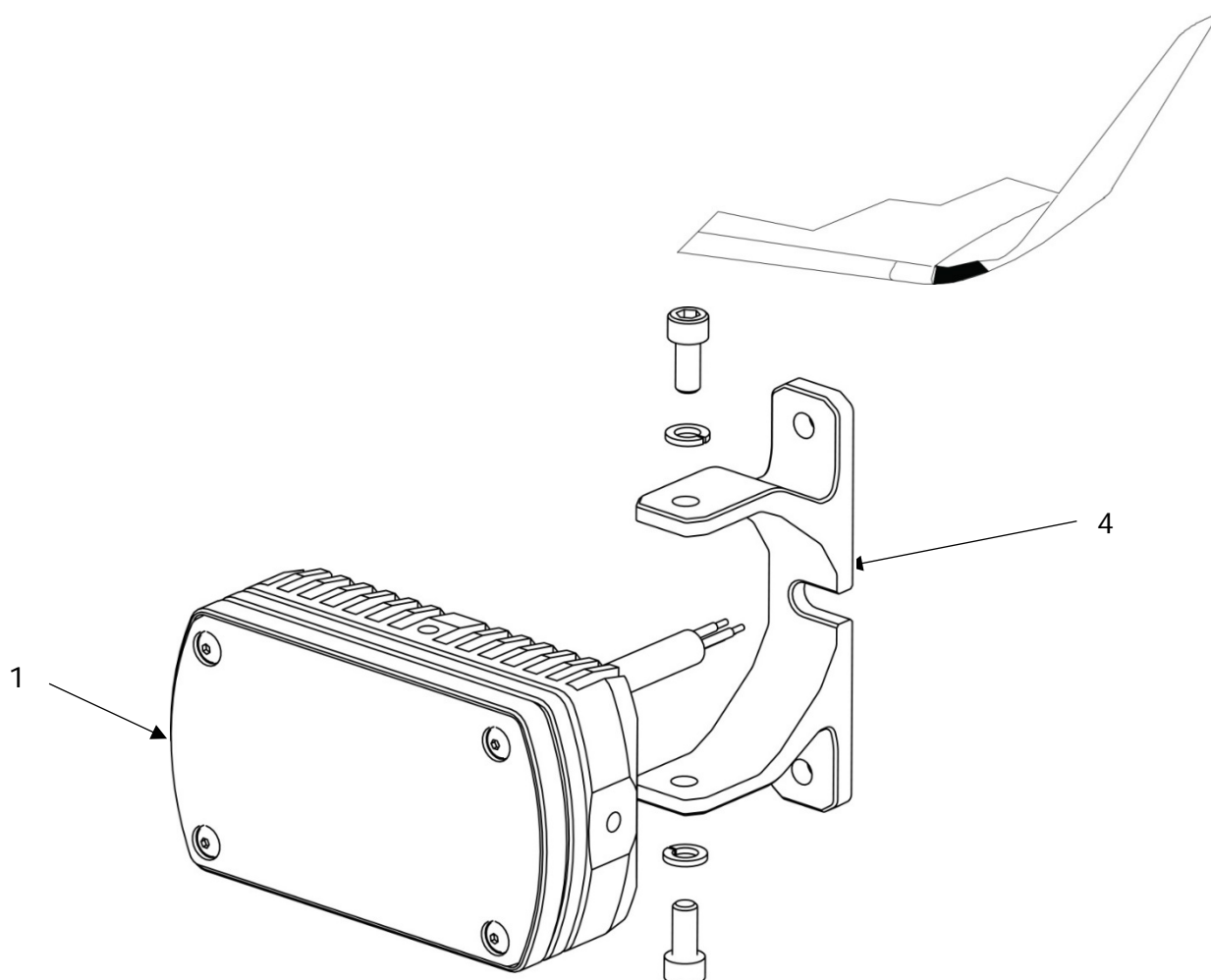


Figure and Index Number	Part Number	Description	Parts Avail.	QTY. Per assy.
1	AVE-N09PANSNL-OHA	Nubion Landing Light		1
2	MS-16997-31	#8-32 x 3/8" UNC Socket Head Cap Screw		2
3	MS-35338-137	#8 Split Lock Washer		2
4	AVS-P000104701-A6B	Bracket - Vertical		1

NOTES

1. Gain access to the wingtip recognition light according to AMM
2. Remove original recognition light according AMM and disconnect the light.
3. Remove original holder
4. Inspect the location for corrosion and if applicable, repair according to the aircraft's SRM
5. Install new holder and light as described above
6. Connect the light to the wiring with a standard wiring splice as per AMM standard practice and manual AVE-N09PANSNT-OHA-IM
7. Close area according to AMM

1.6 Recognition Light Installation – Right

Kit Number: GLF-07

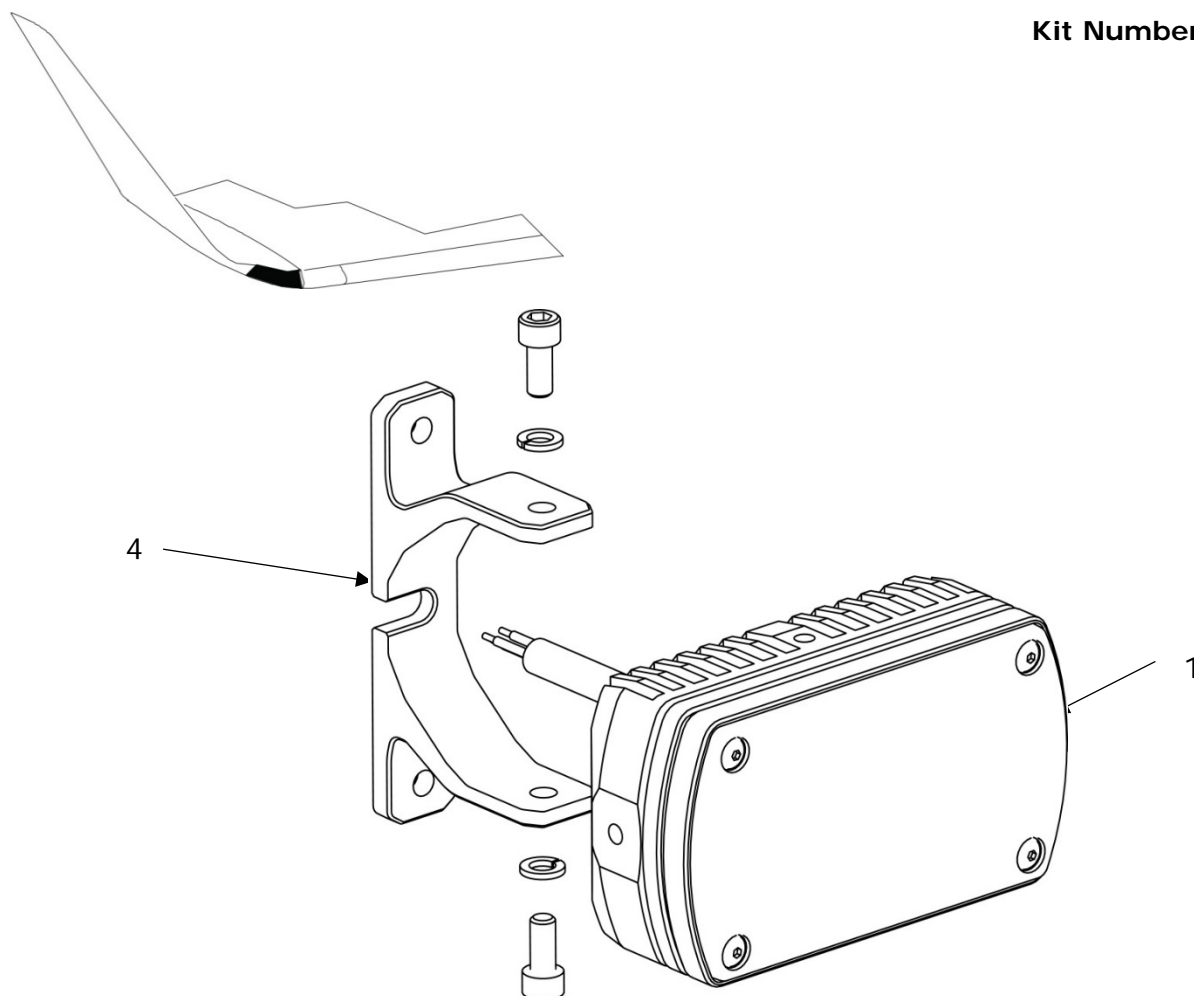


Figure and Index Number	Part Number	Description	Parts Avail.	QTY. Per assy.
1	AVE-N09PANSNL-OHA	Nubion Landing Light		1
2	MS-16997-31	#8-32 x 3/8" UNC Socket Head Cap Screw		2
3	MS-35338-137	#8 Split Lock Washer		2
4	AVS-P000104701-A6B	Bracket - Vertical		1

NOTES

1. Gain access to the wingtip recognition light according to AMM
2. Remove original recognition light according AMM and disconnect the light.
3. Remove original holder
4. Inspect the location for corrosion and if applicable, repair according to the aircraft's SRM
5. Install new holder and light as described above
6. Connect the light to the wiring with a standard wiring splice as per AMM standard practice and manual AVE-N09PANSNT-OHA-IM
7. Close area according to AMM

1.7 Wing-tip Downwash Light Installation - left

Kit Number: GLF-08

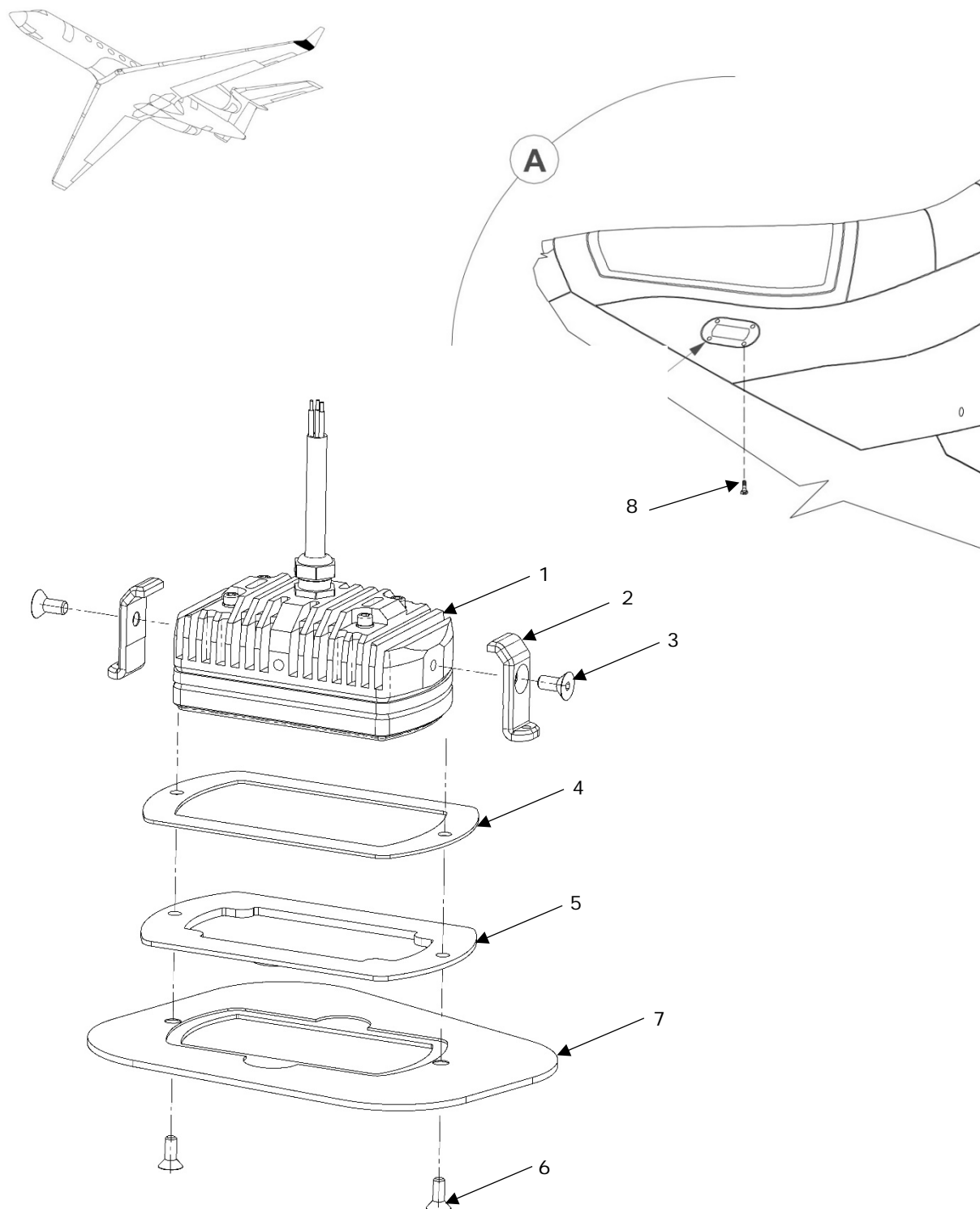


Figure and Index Number	Part Number	Description	Parts Avail.	QTY. Per assy.
1	AVE-N09PANSNT-OHA	Nubion Taxi Light		1
2	AVS-P000104681-A60	Downwash Bracket		2
3	MS-24671-13	#8-32 x 3/8" UNC Socket Flat Head Screw		2
4	AVS-P000104683-A60	Frame		1
5	AVS- P000104682-A00	Gasket		1
6		Original screw		2
7		Original Item		1
8	MS24693-C23	#6-32 x 3/16" UNC Socket Flat Head Screw		1

NOTES

1. Gain access to the wingtip downwash light according to AMM
2. Remove original recognition light according AMM and disconnect the light.
3. Install new light as described above to the original holder #7, use original hardware #6 and #8.
4. Connect the light to the wiring with a standard wiring splice as per AMM standard practice and manual AVE-N09PANSNT-OHA-IM
5. Close area according to AMM

1.8 Wing-tip Downwash Light Installation - right

Kit Number: GLF-08

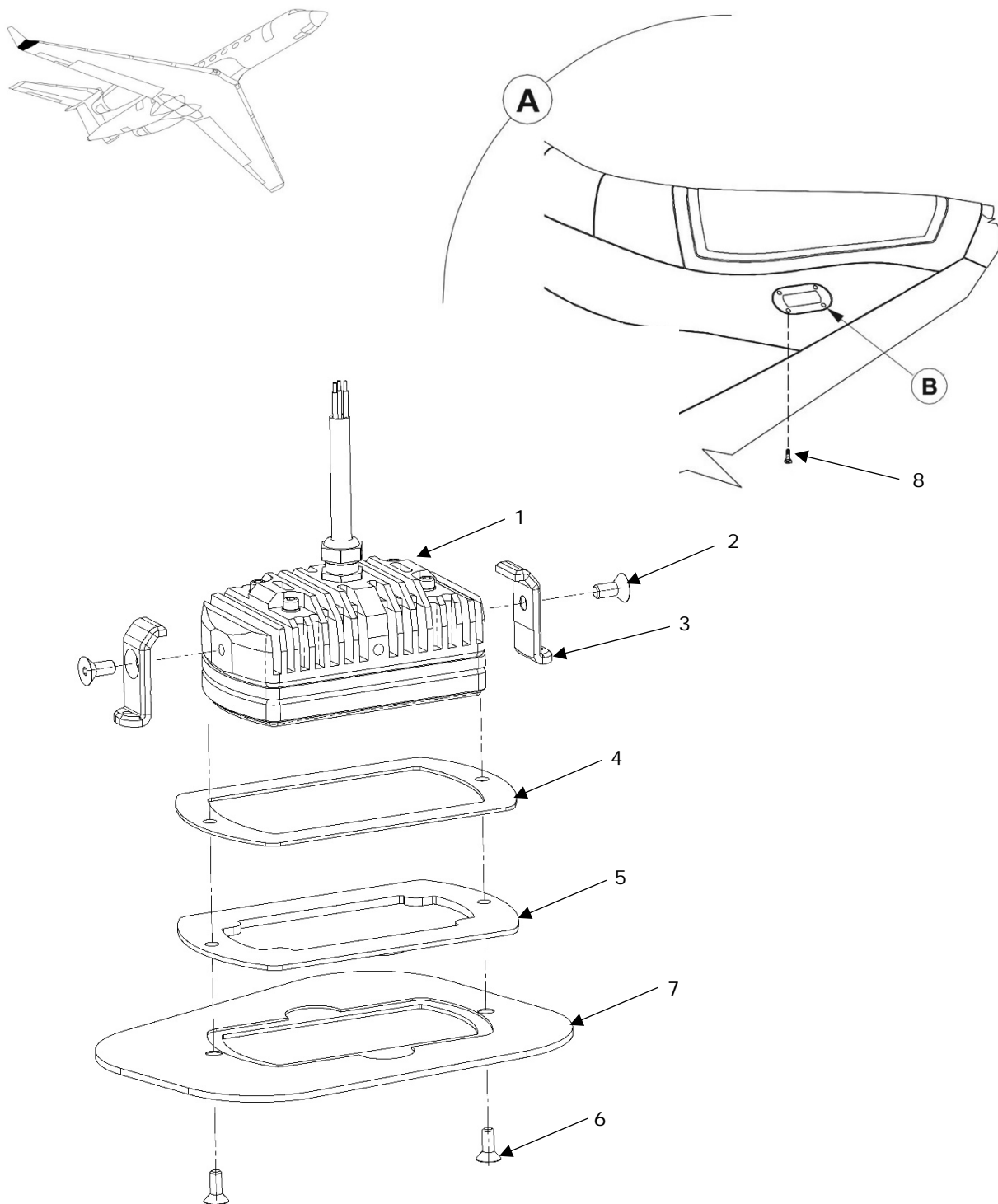


Figure and Index Number	Part Number	Description	Parts Avail.	QTY. Per assy.
1	AVE-N09PANSNT-OHA	Nubion Taxi Light		1
2	AVS-P000104681-A60	Downwash Bracket		2
3	MS-24671-13	#8-32 x 3/8" UNC Socket Flat Head Screw		2
4	AVS-P000104683-A60	Frame		1
5	AVS- P000104682-A00	Gasket		1
6		Original screw		2
7		Original Item		1
8	MS24693-C23	#6-32 x 3/16" UNC Socket Flat Head Screw		1

NOTES

1. Gain access to the wingtip downwash light according to AMM
2. Remove original recognition light according AMM and disconnect the light.
3. Install new light as described above to the original holder #7, use original hardware #6 and #8.
4. Connect the light to the wiring with a standard wiring splice as per AMM standard practice and manual AVE-N09PANSNT-OHA-IM
5. Close area according to AMM

Part 2 Compliance demonstration

This document is in relation to the certification program AVE-MOD-026-PFC.

The compliance is demonstrated for the following certification specification:

Requirements	MoC	Statement of Compliance
CS 25.609 Protection of structure	MoC 0	(a) All parts installed are verified to be suitable. The installation instruction requests the aircraft structure to be inspected for probable corrosion before installing the new lights. (b) Not applicable
CS 25.1301 Function and installation	MoC 0	(a)(1) The Nubion light has been tested to the appropriate environmental condition, which is documented in the referenced CCL (a)(2) The light is labeled as per its limitations (a)(3) All equipment is installed within their limits. (b) The Electric wiring is not changed. Connections are established according aircraft maintenance manual.
CS 25.1529 Instructions for Continued Airworthiness	MoC 0	The modification does not require any changes to the aircraft maintenance procedure which is clearly stated in §1.2 Continued Airworthiness.