

EXCELERON DAYLITE™

TAXI - P/N: AVE-EX9TZYW-ENA
LANDING - P/N: AVE-EX9LZYW-ENA

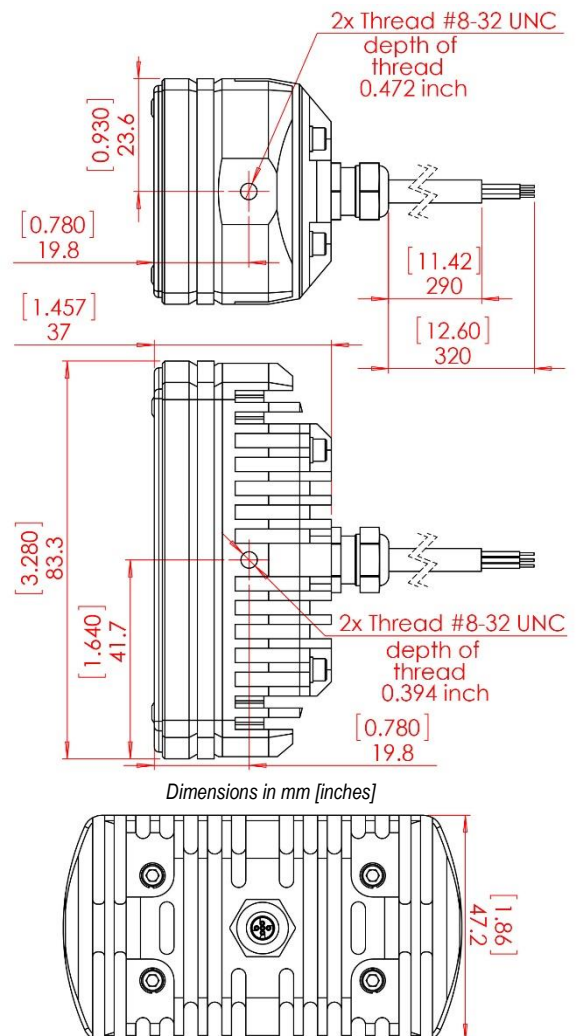
Landing or Taxi LED light



Specification

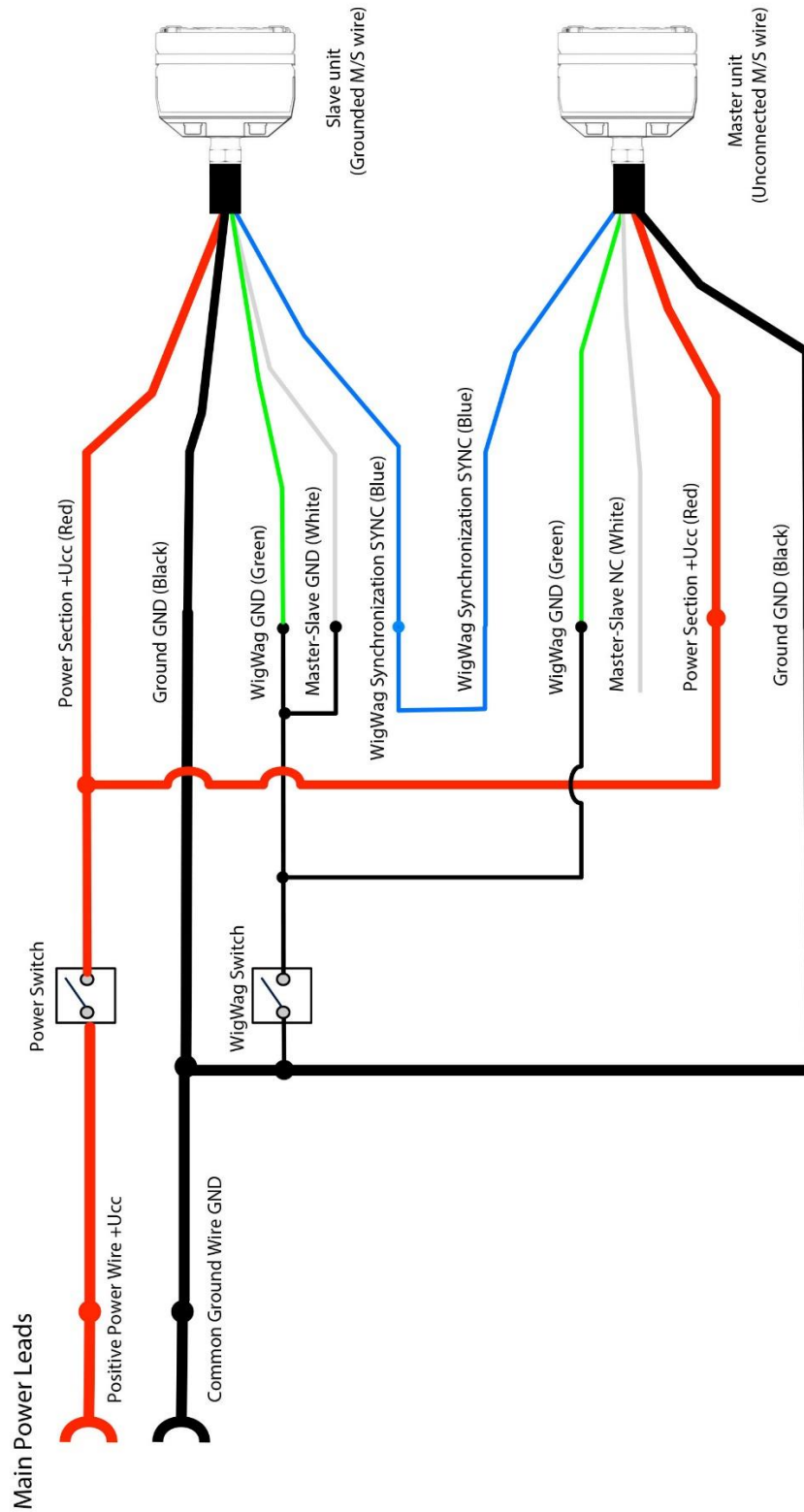
Dimensions (mm):	83,3 mm x 47,2 mm x 37 mm
Dimensions (inches):	3.280" x 1.860" x 1.457"
Weight:	220g / 7.76 oz
Operating Voltage Range:	9 – 36 VDC
Input Current:	2.03A (@9V) 1.85A (@14V) 0.73A (@28V) 0.57A (@36V)
Input Power:	18.3W (@9V) 25.9W (@14V) 20.5W (@28V) 20.5W (@36V)
Ambient Temperature:	from -55°C to +85°C from -67°F to +185°F
Overheat Protection:	YES
Taxi Lens – Viewing Angle:	40° x 20°
Landing Lens – Viewing Angle:	12°
Waterproof, Dust-proof, Shock-proof, Vibration-proof:	YES

Drawing



**NOT APPROVED FOR INSTALLATION ON CERTIFIED AIRCRAFT
THIS IS NOT A TSO CERTIFIED LIGHT**

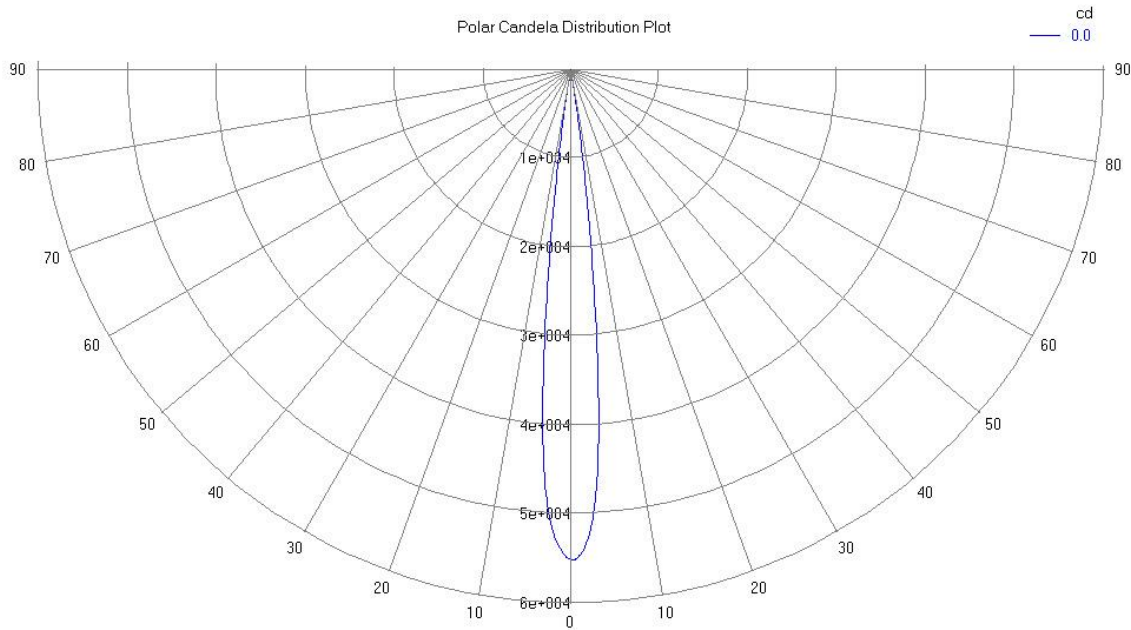
Wiring Diagram



**NOT APPROVED FOR INSTALLATION ON CERTIFIED AIRCRAFT
THIS IS NOT A TSO CERTIFIED LIGHT**

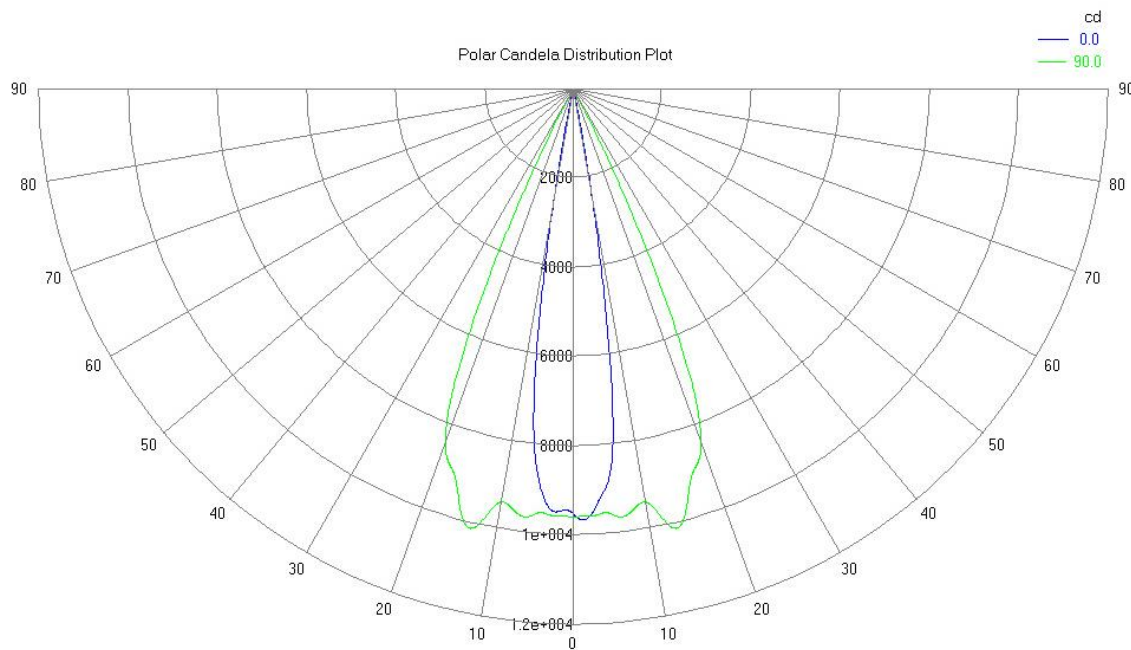
Landing lens

55 000 Cd

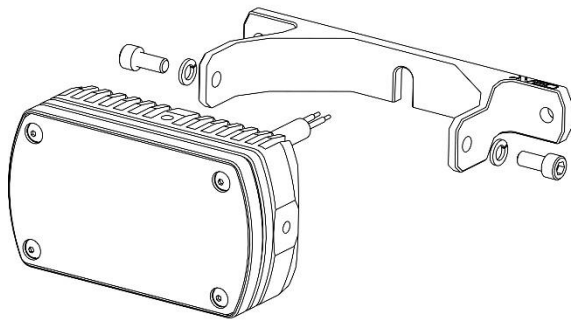


Taxi lens

9 500 Cd

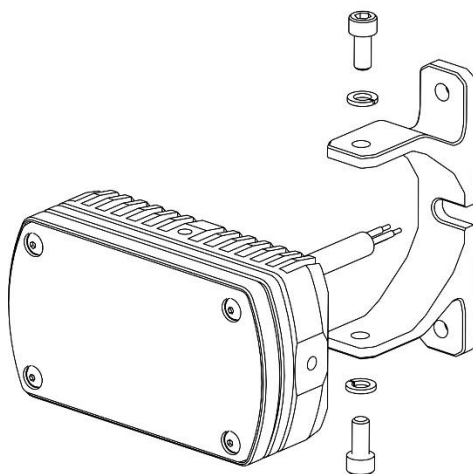
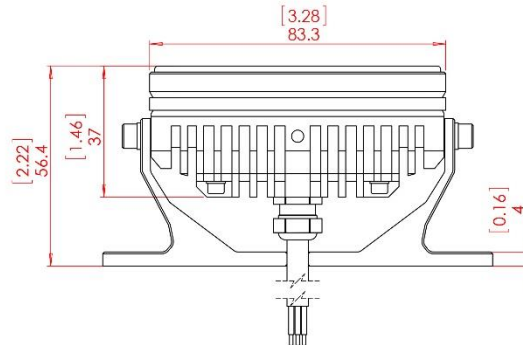
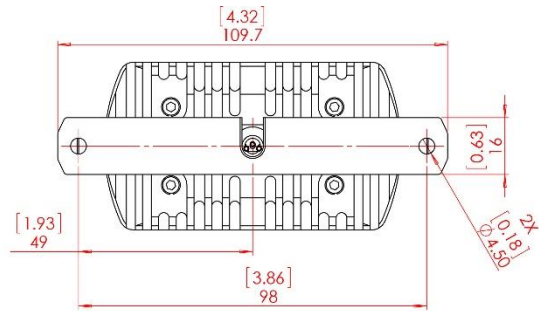


**NOT APPROVED FOR INSTALLATION ON CERTIFIED AIRCRAFT
THIS IS NOT A TSO CERTIFIED LIGHT**



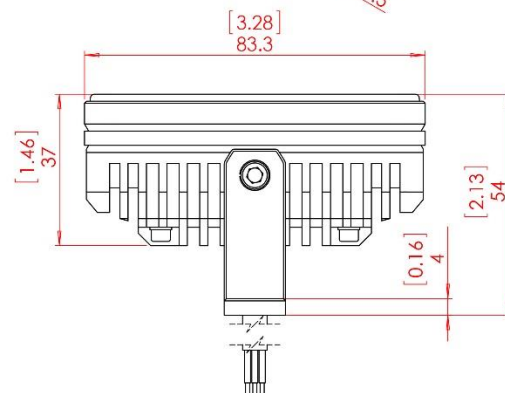
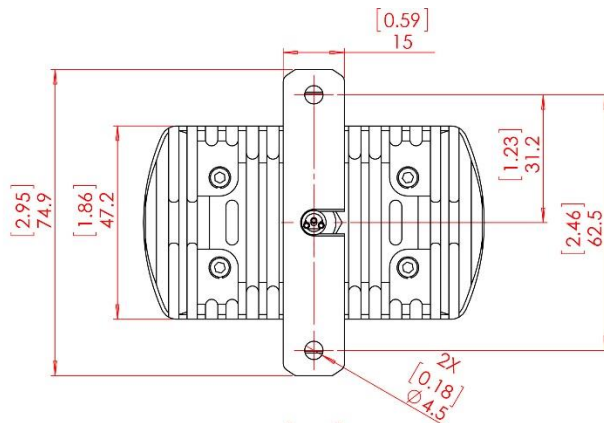
Horizontal bracket

(optional)



Vertical bracket

(optional)



NOT APPROVED FOR INSTALLATION ON CERTIFIED AIRCRAFT
THIS IS NOT A TSO CERTIFIED LIGHT