



Installation Manual
EYEBEAM DOME

Interior Dome LED Light

AVEO
ENGINEERING

Table of Contents

1. GENERAL INFORMATION.....3
MAIN FEATURES:3
2. WIRING DIAGRAM.....3
3. CONTROL & POWER INPUTS:.....4
4. WIRING CHART.....4
5. TECHNICAL SPECIFICATION5
6. TECHNICAL DRAWING5
7. MOUNTING HOLE RECOMMENDATION.....6
8. INSTALLATION INSTRUCTION6
9. FACTORY SERVICE POLICIES.....7

1. GENERAL INFORMATION

The EyeBeam Dome was developed to meet the requests of an interior dome light for all aircraft, that would complement the amazing Aveo EyeBeam products, and their unique touch-controls. Long gone are the days of mechanical switches which can corrode and spark, etc.

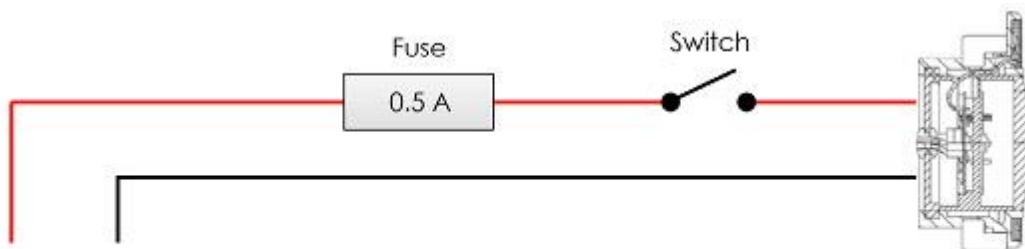
Key Features

- Aveo's exclusive touch-control sense operation
- Low profile design for sleek appearance

MAIN FEATURES:

- 9-36 volt DC input power range
- no external power supply
- capacitive sensing touch controls
- no mechanical switches to fail
- unmatched circuit technology

2. WIRING DIAGRAM



Power source: 9-36V DC

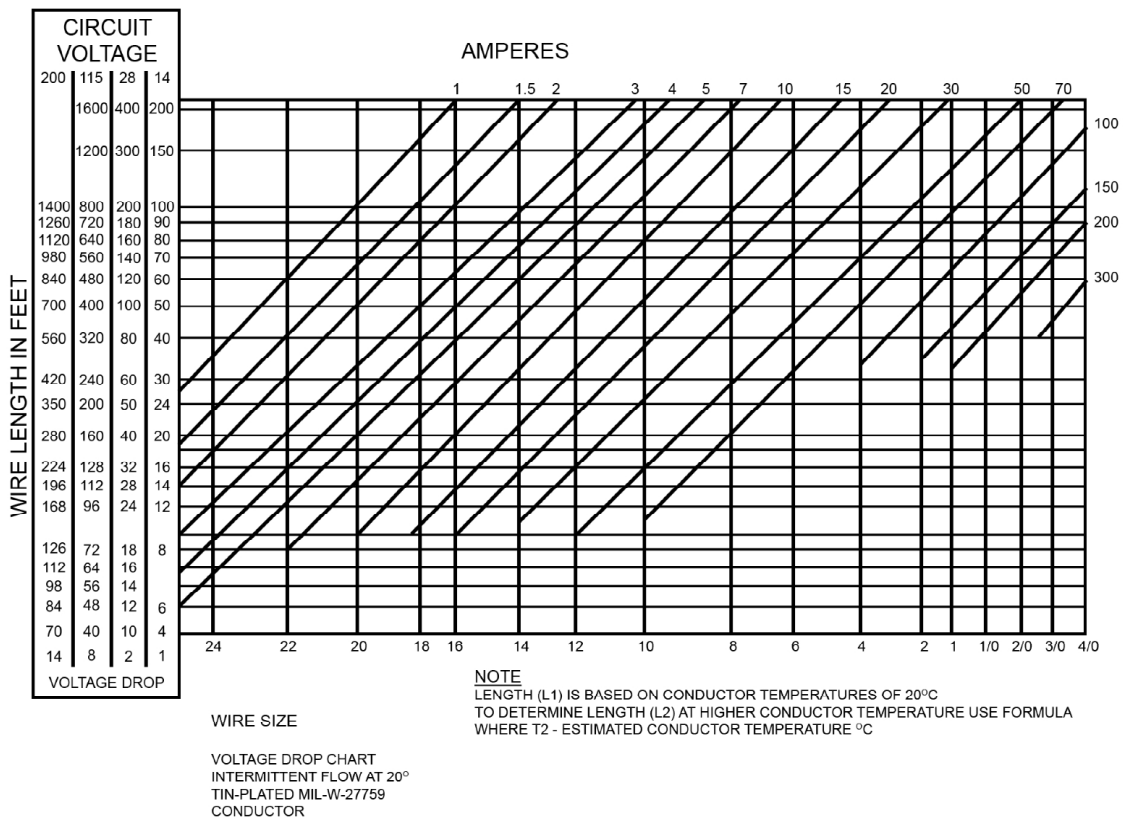
3. CONTROL & POWER INPUTs:

- Red color wire** - positive power supply lead
- Black color wire** - negative power supply lead

Pigtail length: 180 mm / 7.08"
 End of the supplied pigtail is 5mm stripped wire, no coating

Wire size: 0.5 mm² / 20 AWG
Wire outside diameter: 1.5 mm / 0.06"

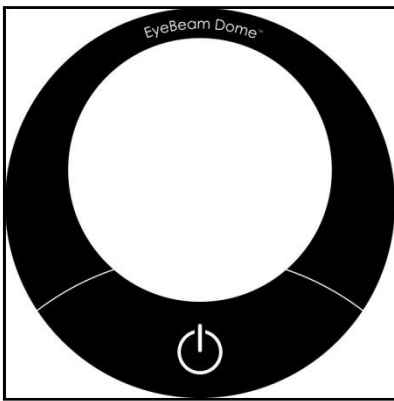
4. WIRING CHART



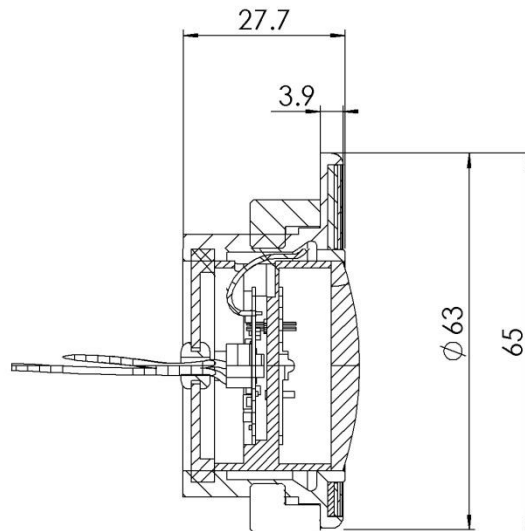
5. TECHNICAL SPECIFICATION

Diameter:	63 mm / 2.48"
Weight:	80 g / 2.82 oz
Operating Voltage Range:	9 – 36 Vdc
Nominal Voltage:	12V or 24V
Current (@12V):	0.2A (full brightness)
Wide viewing angle:	115°-130°
Colour:	Neutral White

Faceplate:

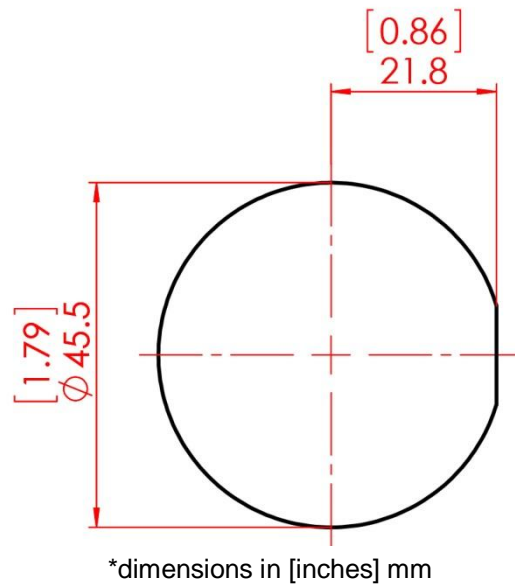


6. TECHNICAL DRAWING



*dimensions in mm

7. MOUNTING HOLE RECOMMENDATION



8. INSTALLATION INSTRUCTION

a. Unpacking and Inspection

Verify all ordered parts listed were received and sustained no shipping damage. Where evidence of shipping damage exists, save the shipping carton and packing material to help substantiate your claim to the shipping company. Retain the original shipping carton and packing material in case you need to ship the unit for service.

b. Orientation

The components can be positioned in any orientation, however the EyeBeam's are to be positioned to project light as intended.

c. Cooling

The EyeBeam Dome components are not equipped with air vents or fans, which can be blocked and therefore this consideration is not required.

9. FACTORY SERVICE POLICIES

Service of an EyeBeam Dome component performed at the factory typically includes an overhaul consisting of a thorough inspection, repair as needed and functional tests. Prepare a packing slip that includes the part number(s) and serial number(s) of the items to be returned, along with a complete description of the problem, requested service and special instructions. The packing slip must also include a contact name, daytime telephone number and return shipping address.

To return an item, securely pack it in the original shipping container, if possible, and ship it to Aveo Engineering Group at following address:

Aveo Engineering Group, s.r.o.
Příbram Airport (LKPM)
Drásov 202
261 01 Drásov
Czech Republic
Tel.: +420 731 116 567
Fax: +420 326 531 098
e-mail: michal@aveogroup.com